



UNLIMITED CYCLES WARRANTY

AM10+



51.2V

Nominal Voltage

10kWh

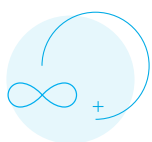
Capacity

200Ah

Rated Capacity

FEATURES

- + Unlimited Cycle Warranty (Ts & Cs apply)
- + Prismatic LiFePO4 Cells
- + 1C High Performance Lithium Battery
- + Integrated 24/7 Monitoring with the Hubble Cloudlink
- + Advanced BMS with Current Limiting Function
- + Easy Wall Mount Installation
- + Informative RGB LED Display Strip
- + High Cycle and Service Life
- + Compatible with most Inverters and Chargers
- + Built in Protection for Over-Charge, Over-Discharge & Over-Temperature
- + CAN Bus, Fully Integrates & Communicates with Leading Inverter Brands
- + Scalable System (up to 15 Units)
- + Compatible with AM-10 (with Cloudlink)



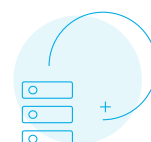
UNLIMITED CYCLE
WARRANTY
(Ts & Cs Apply)



INTEGRATED
MONITORING



SAFE +
RELIABLE



SCALABLE

TECHNICAL DATA

BATTERY PARAMETER	SPECIFICATION
Model	Hubble AM-10+
Battery Type	LiFePO ₄ (LFP) 16 Cells per Battery
Nominal Voltage	51.2 Vdc
Nominal Energy	10 kWh
Design Capacity	200 Ah
Operating Voltage Range	43.2 Vdc – 58.4 Vdc
Charging Voltage	55.2 Vdc
Charge Current (A)**	115 A max
Discharge Current (A)	200 A max
Cell Service Life	Unlimited Cycles within the 10 Year Warranty (T's & C's Apply)
Design Lifetime	15 Years
BATTERY MANAGEMENT SYSTEM (BMS)	
Power (Self-Consumption)	≤ 2 W
Cell Balancing (Charging Mode)	Passive - Activated once Cells are close to Full Charge Voltage.
Intelligent Current Limiter	Limits Charging Current to 20 A if it exceeds 200 A.
Protection	Over Charge; Over Discharge; Over Current; Short Circuit; Over and Under Temperature
CLOUDLINK (MONITORING)	
Power (Self-Consumption)	≤ 2 W
Wi-Fi Protocol	802.11 b/g/n/e/i (802.11n up to 150 Mbps)
Communication	CAN / RS485 / RS232
PHYSICAL	
Dimensions	675 * 510 * 230mm (Height, Width, Depth)
Weight	89 kg
Installation Mounting	Wall Mounted - Mounting Bracket
ENVIRONMENTAL	
Operating Temperature	-10 °C to 50 °C
Storage Temperature	10 °C to 50 °C
Humidity	15% to 75%
Certification	CE IEC UN38.3



Integrated Remote
Monitoring with the
Hubble Cloudlink



* Due to continuous product improvements specifications are subject to change without prior notice.

** To prolong battery life the recommended charge current is 60A.