



HIGH VOLTAGE SYSTEMS



204 - 615V

Nominal Voltage

100Ah

Rated Capacity

20.4 - 61.5kWh

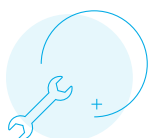
Capacity

FEATURES

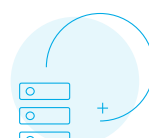
- + Smart BMU
- + Built-in Cloudlink for 24/7 monitoring
- + Optional proactive monitoring service
- + Innovative modular design for ease of transport and installation
- + Intelligent touch screen
- + Firmware updates over the internet
- + 1C high-performance ESS
- + High cycle & service life
- + Easy rackmount system modules
- + 16 LiFePO4 cells per battery module
- + Compatible with most high voltage inverters
- + CAN Bus, fully integrates and communicates with leading Inverter brands
- + Parallel up to 8 ESS Systems per string with full communications



**REMOTE MONITORING +
TECHNICAL SUPPORT**



**EASY INSTALLATION +
ON-SITE COMMISSIONING**



SCALABLE



**SAFE +
RELIABLE**

TECHNICAL DATA

Item	HV-204	HV-307	HV-410	HV-512	HV-615
Design Capacity	20.4 kWh	30.7 kWh	41.0 kWh	51.2 kWh	61.5 kWh
*Rated Capacity (5HR)	100 Ah				
Nominal Voltage	204 V	307 V	410 V	512 V	615 V
Discharge Cutoff Voltage	179 V	269 V	358 V	448 V	576 V
Equalized Charge Voltage	223 V	335 V	446 V	557 V	668 V
Max. Continuous Charging Current	100 A				
Max. Continuous Discharging Current	100A				
C Rating	1.0 C				
Depth of Discharge	100%				
Cycle Life @ 1C	+/- 6000 Cycles @ 50% DOD, Above 3000 cycles @ 100% DOD				
Design Life	+/- 15 Years				
Monitoring	Wi-Fi enabled cloud monitoring				
Parallel	Parallel connection up to 8 packs with full communications				
Ports	1x CAN-bus, 2x Battery Link Ports				
Cells	New Li-ion Prismatic LiFePO4 Cells				
Cells Per Pack	16 Cells per pack				
Total Cells	64 Cells Total	96 Cells Total	128 Cells Total	160 Cells Total	192 Cells Total
Protection	Electronic Circuit Breaker, BMS Voltage Protection, Current Limiting				
Operating Temperature	Charging: 0 to +55°C Discharging: 0 to +55°C Storage: 0 to +55°C				
Weight	Approx. 230kg without cabinet	Approx. 400kg without cabinet	Approx. 450kg without cabinet	Approx. 550kg without cabinet	Approx. 650kg without cabinet
Dimensions (HxWxD) mm	22U Cabinet: 1200 x 610 x 1102	47U Cabinet: 2200 x 610 x 810			
Outer Package Material	Black Baked Lacquer Steel Case				
Certification	CE, UN38.3, GBT31484-2015, GBT31485-2015, GBT31486-2015				



Built-in Remote Monitoring with the Hubble Cloudlink



* Due to continuous product improvements specifications are subject to change without prior notice.