



# ENERGY CUBE

OUTDOOR SOLUTION



50-80kW

Power

143-160kWh

Storage Capacity

65-128kW

PV Capacity

## FEATURES

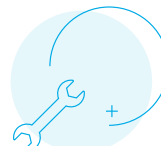
- + Hybrid inverter with integrated EMS
- + <20ms transfer time
- + 10 year warranty on batteries (Ts & Cs apply)
- + Intelligent air cooling with professional airflow design
- + Fire suppression, smoke detectors & alarm system
- + Integrated industrial air conditioning system
- + Forkliftable, easy rigging eye bolts
- + Service level agreement (optional)
- + Remote monitoring & reporting
- + On-site assistance & commissioning
- + Off-grid, on-grid & solar ready
- + System certified: **UN3536**  
**UN38.3**  
**NRS097**  
**IP54**



**SERVICE LEVEL AGREEMENT (OPTIONAL)**



**REMOTE MONITORING + TECHNICAL SUPPORT**



**EASY INSTALLATION + ON-SITE COMMISSIONING**



**INTELLIGENT FIRE SUPPRESSION SYSTEM**

# TECHNICAL DATA

## BATTERY PARAMETERS

### 50kW/143kWh

### 80kW/160kWh

Cell Type

Li-Ion

Cell Specification

3.2V 280Ah

3.2V 314Ah

Cell Combination

160S1P

1P160S

Battery Capacity

143kWh

160kWh

Max. Charge & Discharge Power

50kW

80kW

Max. Charge & Discharge Current

100A

160A

Battery Rated Voltage (V)

512V

Battery Voltage Range (V)

448V-584V

464V-576V

## AC OUT DATA (ON/OFF GRID)

Max. AC Output Power (kVA)

55kVA

88kVA

Rated AC Output & Power (kW)

50kW

80kVA

Peak Power (Off Grid) (kW)

1.5 time of Rated Power, 10s

Rated Output Voltage

400V

AC Output Rated Current (A)

72.5A

115.9A

Voltage Range (V)

320V-460V

Rated Output Frequency

50/60Hz

THDI

<3%

Power Factor

0.8 Leading to 0.8 Lagging

Grid Type

Three Phase + N

On/Off Grid Switch Time

<20ms

## PV STRING INPUT DATA

Max. DC Input Power (W)

65kW

160kW

Max. DC Input Voltage (V)

DC1000V

Start-Up Voltage (V)

DC180V

Full Load DC Voltage Range (V)

450-850V

PV Input Current (A)

36+36+36+36A

36+36+36+36+36+36A

Max. PV Isc (A)

55+55+55+55A

55+55+55+55+55+55A

No. of MPPT Trackers

4

6

No. of Strings Per MPPT Tracker

2+2+2+2

2+2+2+2+2+2

## SPECIFICATION

Cabinet Size (W\* D\* H)

1180\*1020\*2275 mm

Weight

1780kg (approx.)

1850kg (approx.)

Max. Cycle Efficiency

≥90%

Protection

IP54

Auxiliary Power Supply

Self-Powered

Corrosion Resistance Rating

C3

Operating Humidity Range

0%-100% (Non-Condensing)

Operating Temperature Range

-30°C-50°C (>45°C Derating)

Max. Operation Altitude

2000 m

Battery Cabinet Cooling Method

Intelligent Air Cooling

Fire Safety Configuration

Gas-Based Fire Extinguishing System, Pressure Relief Valve, Pack-Level Fire Protection, Cluster-Level Fire Protection

Communication

Ethernet, 485, CAN

Communication Protocol

Modbus TCP