



UNLIMITED CYCLES WARRANTY

# BLADE



51.2V

Nominal Voltage

7.2kWh

Capacity

137Ah

Rated Capacity

## FEATURES

- + Unlimited Cycle Warranty (Ts & Cs apply)
- + New Li-ion LiFePO4 Blade Prismatic Cells
- + 1.5C High Performance Lithium Battery
- + Integrated Cloudlink 24/7 Monitoring Included
- + Advanced BMS with Current Limiting Function
- + Firmware Updates over the Internet
- + High Cycle & Service Life
- + Heavy Duty Side Handles for Easy Handling & Mounting on the Wall
- + Built in Protection for Over-Charge, Over-Discharge & Over-Temperature
- + CAN Bus, Fully Integrates & Communicates with Leading Inverter Brands
- + Internal Wiring Cable Compartment for Safer & Easier Installs
- + Informative LED Display Strip



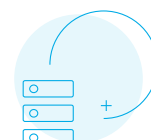
UNLIMITED CYCLE WARRANTY  
(Ts & Cs Apply)



INTEGRATED MONITORING



SAFE + RELIABLE



SCALABLE

# TECHNICAL DATA

Item	Specifications
Model	Hubble Blade
*Rated Capacity (5HR)	137 Ah
Nominal Voltage	51.2 V
Design Capacity	7.2 kWh
Discharge Cutoff Voltage	44.8 V
Equalized Charge Voltage	55.8 V
Max. Continuous Charging Current	140 A
Max. Continuous Discharging Current	200 A
C Rating	1.5 C
Depth of Discharge	100%
Weight	Approx. 64 Kg
Monitoring	Built-in Wi-Fi enabled cloud monitoring
Parallel	Parallel connection up to 15 packs with full communications
Dimensions (WxDxH) mm	1125mm x 175mm x 340mm
Ports	1x CAN-bus, 2x Battery Link Ports, 1x Axpert Inverter Port
Cells	16 Cells. New Li-ion LiFePO4 Blade Prismatic Cells
Design Life	+/- 15 Years
Cycle Life @ 1C	Unlimited cycles within the Hubble Energy 10 year warranty ( <i>Ts &amp; Cs Apply</i> )
Certification	CE, UN38.3
Outer Package Material	White bake lacquer steel case
Operating Temperature	Charging: -20 to +55°C   Discharging: -30 to +55°C   Storage: -30 to +55°C
Protection	Electronic Circuit Breaker, BMS Voltage Protection, Current Limiting



Integrated Remote  
Monitoring with the  
Hubble Cloudlink



\* Due to continuous product improvements specifications are subject to change without prior notice.

\*\* To prolong battery life the recommended charge current is 50A.